

CURWEN



EDITION

60 cents (In U.S.A.)

ST. PAUL'S SUITE.

For String Orchestra.

Violin I.

Jig

1



GUSTAV HOLST.

Vivace.

Violin I.

Violin I. Musical score for Violin I and Piano accompaniment. The score is written in G major (one sharp) and 2/4 time. It consists of 10 staves, with measures 4, 5, 6, and 7 marked with boxed numbers. The Violin I part features various dynamics and articulations, including *cresc.*, *f non legato*, *div.*, *f*, *poco pesante*, and *ff*. The Piano accompaniment includes markings such as *div.*, *pp cresc. poco a poco*, and *ff*. The score concludes with a double bar line and repeat signs.

4

cresc. *f non legato*

5

div. *unis.* *p*

6

f *poco pesante*

7

pp cresc. poco a poco *pp cresc. poco a poco* *ff* *ff* *unis.*

Violin I.

8

Violin I musical score, measures 8-18. The score is written for a single violin in G major, 6/8 time. Measure 8 is marked with a box containing the number 8. The tempo is *pesante non legato*. The score includes a piano introduction (measures 9-10) marked *p cresc.* and *fff*. The main melody (measures 11-18) is marked *non legato* and *simile accel.*. The score concludes with a double bar line and a *p* dynamic marking.

8

pesante non legato

p cresc. *fff*

non legato

simile accel.

p

Violin I.

Ostinato

2

Presto. con sord.

pizz.

pp

Solo
arco

arco

unis.

1

4

2

cresc. poco a poco

div.

Violin I.

5

3

ff

ff

unis.

4

8

div. *p*

8

p

loco

loco

unis.

5

f

p

f

p

dim.

pp

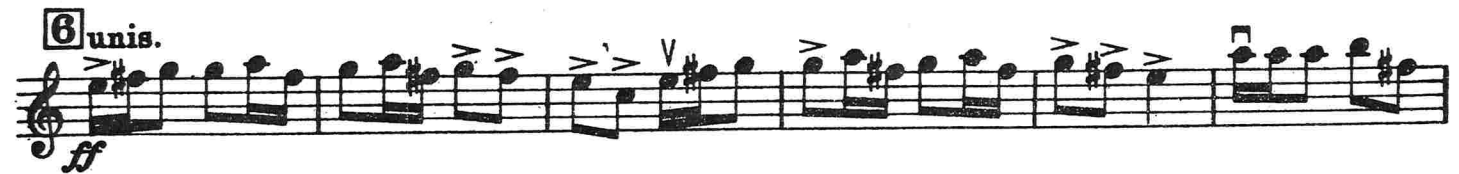
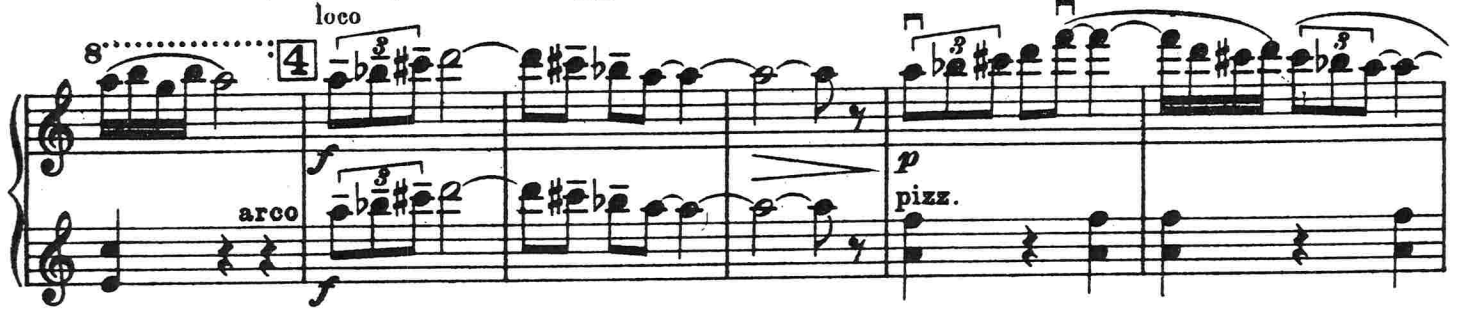
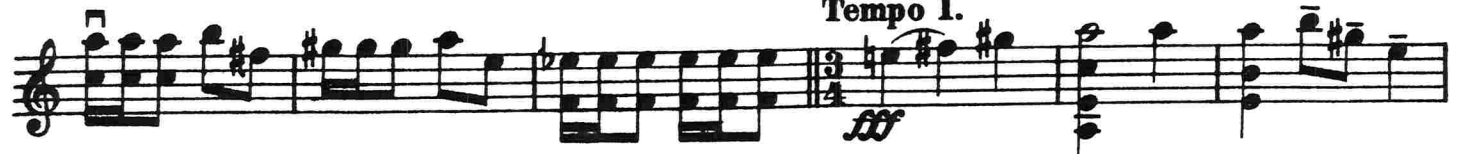
ppp

1 div.

Violin I.

7

Tempo I.



Violin I.

Finale
(The Dargason)

4

Allegro.

p

1

pizz.
cresc.

cresc. **arco** *f*

2

dim.

3 L'istesso tempo.
One beat in a bar

pp

mp cantabile

pp **4**

42902

Violin I.

9

4 Two beats in a bar

f *cresc.* *ff*

ff *div.* *ff* *unis.*

ff *div.* *sempre ff*

ff *div.* *sempre ff*

ff *div.* *sempre ff*

ff *div.* *sempre ff*

Violin I.

Violin I musical score page 10. The page contains ten staves of music. The first staff is a grand staff (treble and bass clef) with a key signature of one flat (B-flat). The second staff begins with the instruction "unis." and a box containing the number 8. The third staff continues the melody. The fourth staff begins with a box containing the number 9 and the instruction "One beat in a bar". The fifth staff continues the melody with the instruction "sempre ff". The sixth staff continues the melody with the instruction "dim.". The seventh staff begins with a box containing the number 10 and the instruction "Two beats in a bar". The eighth staff continues the melody with the instruction "pp". The ninth staff continues the melody with the instruction "Solo". The tenth staff continues the melody with the instruction "Tutti". The page number 42902 is in the bottom left corner.

unis.

8

9 One beat in a bar

sempre ff

dim.

10 Two beats in a bar

pp

Solo

Tutti

42902